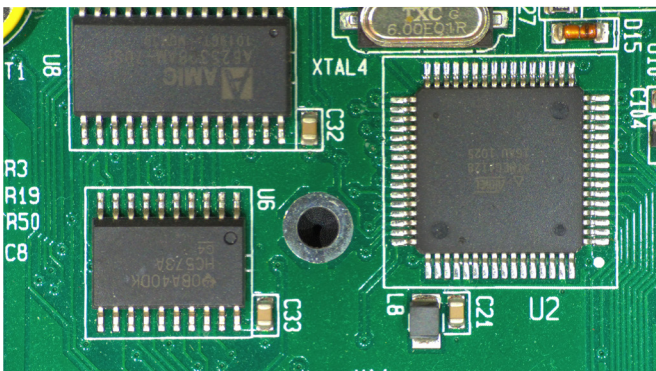




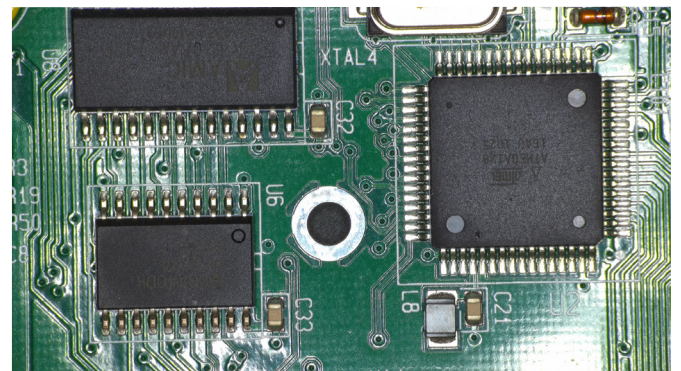
# RINGSPOT-H4KAZF

## LARGE RING LIGHT

- ▶ Super Bright
- ▶ 12 x 1W LEDs
- ▶ Adjustable Direction and Angle.



PCB image captured with RING-SPOT-H4KAZF



PCB image captured with Small ring light

# RINGSPOT-H4KAZF

Features	LEDs	12 x 1 watt LEDs
	Power	12V/2A
	Adjustments	Single LED illumination angle adjustable(left or right 30 degrees)
	Switch	Single LED on/off switch
	Dimension	Ø200mm

